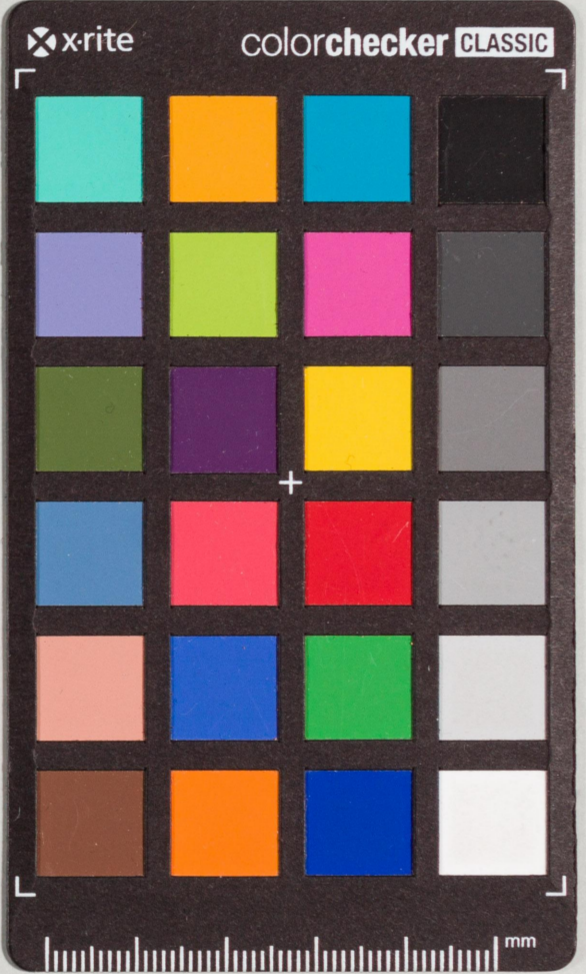


Handwritten Japanese text in cursive (sōsho) style, written on aged paper. The text is arranged in approximately 15 vertical columns, reading from right to left. The characters are fluid and connected, typical of the cursive style. The paper shows signs of age, including yellowing and some staining.





Handwritten Japanese text in cursive (sōsho) style, consisting of approximately 25 vertical columns of characters. The text is written on aged paper and is partially obscured by a ruler at the bottom of the image.







Handwritten Japanese text in cursive style (sōsho), likely a letter or document fragment. The text is written on a strip of paper and is partially obscured by a ruler at the bottom.



Handwritten Japanese text in cursive (sōsho) style, likely a letter or document fragment. The text is written vertically on a piece of aged paper. The characters are fluid and connected, characteristic of the cursive style. There are several red circular seals or stamps visible on the left side of the page, partially overlapping the text.



Handwritten text in a cursive script, likely a letter or document fragment. The text is written on a piece of paper that has been folded and is now lying flat. The characters are dark and appear to be ink on a light-colored background. The text is arranged in several lines, with some characters being larger and more prominent than others. The overall style is characteristic of traditional Japanese calligraphy.

Handwritten text in a cursive script, continuing from the previous section. The characters are dark and appear to be ink on a light-colored background. The text is arranged in several lines, with some characters being larger and more prominent than others. The overall style is characteristic of traditional Japanese calligraphy.

Handwritten text in a cursive script, continuing from the previous section. The characters are dark and appear to be ink on a light-colored background. The text is arranged in several lines, with some characters being larger and more prominent than others. The overall style is characteristic of traditional Japanese calligraphy.

Handwritten text in a cursive script, continuing from the previous section. The characters are dark and appear to be ink on a light-colored background. The text is arranged in several lines, with some characters being larger and more prominent than others. The overall style is characteristic of traditional Japanese calligraphy.

Handwritten text in a cursive script, continuing from the previous section. The characters are dark and appear to be ink on a light-colored background. The text is arranged in several lines, with some characters being larger and more prominent than others. The overall style is characteristic of traditional Japanese calligraphy.

